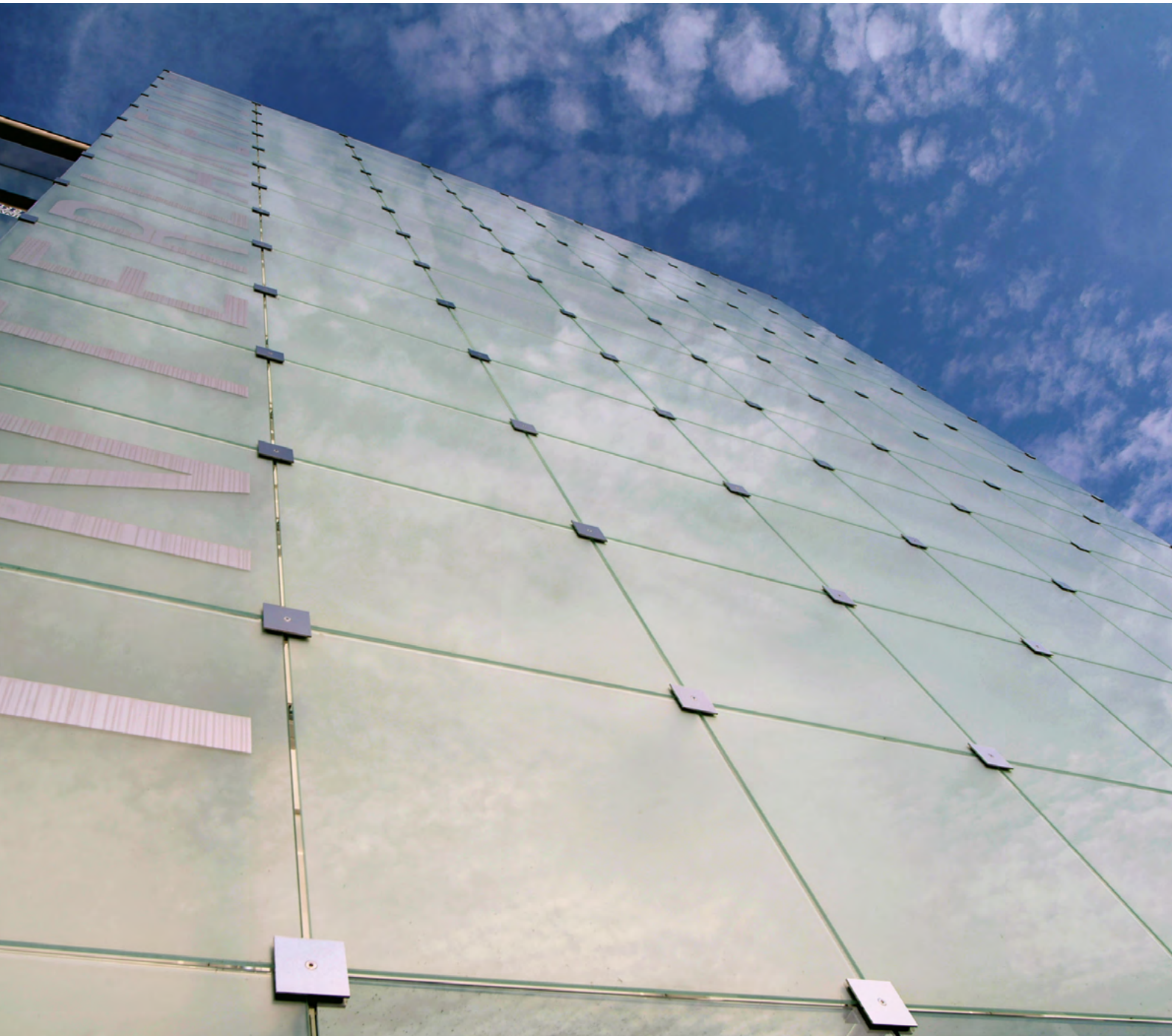




EUROLAMEX[®]

Laminated safety glass



Tested laminated safety glass

Product	Type of PVB film	Ball drop test DIN EN 356	Pendulum impact DIN EN 12 600	Resistance to ball impact DIN 18032-3	Sound reduction index Rw
EUROLAMEX 4.2	Clear	P2A	Category 1	-	-
EUROLAMEX 4.4	Clear	P2A	Category 1	-	-
EUROLAMEX 6.1	Clear	P1A	Category 2	-	-
EUROLAMEX 6.2	Clear	P2A	Category 1	4.200 x 2.250 mm	-
EUROLAMEX 6.4	Clear	P4A	Category 1	-	-
EUROLAMEX 8.1	Clear	-	-	4.200 x 2.250 mm	-
EUROLAMEX 8.2	Clear	P2A	Category 1	4.200 x 2.250 mm	-
EUROLAMEX 8.4	Clear	P4A	Category 1	-	-
EUROLAMEX 8.6	Clear	P5A	-	-	-
EUROLAMEX 12.8	Clear	P6B	-	-	-
EUROLAMEX 6.2	Matt	P2A	-	-	-
EUROLAMEX 8.2	Matt	P2A	-	-	-
EUROLAMEX 10.2	Matt	P2A	-	-	-
EUROLAMEX 12.2	Matt	P2A	-	-	-
EUROLAMEX S Phon 6.2	Sound reduction	P2A	Category 1	-	35 dB
EUROLAMEX S Phon 8.1	Sound reduction	P1A	Category 1	-	37 dB
EUROLAMEX S Phon 8.2	Sound reduction	P2A	Category 1	-	37 dB
EUROLAMEX S Phon 8.4	Sound reduction	P4A	Category 1	-	-
EUROLAMEX S Phon 12.2	Sound reduction	P2A	Category 1	-	40 dB
EUROLAMEX S Phon 12.4	Sound reduction	P4A	-	-	-

Glass structure : EUROLAMEX 6.1 (6 = element thickness in mm consist of 2 x float glass 3 mm; 1 = quantity of foil 0,38 mm); other thickness and special sizes available ; max. dimensions 3.210 x 8.000 mm

Properties:

In practice a distinction is made between passive and active safety.

- passive safety: injury -reducing, shard - retaining, fall - preventing
- active safety: glass provide against- thrown objects, break in or out, explosion pressure
- P1A - P5 A is classified against thrown objects, P6B - P8B stands for penetration- resistant

Application:

- framed facades elements
- overhead and roof glazing in private and public applications
- recommendation of sound reduction glass, to reduce sound of rain and hailstone
- walkin glazing to clean area and point- fixed roof glazing (approval in individuallity case)
- single glazing in doors, stairway landings, stairway railings
- balustrade elements
- burglary protection for floor level windows

